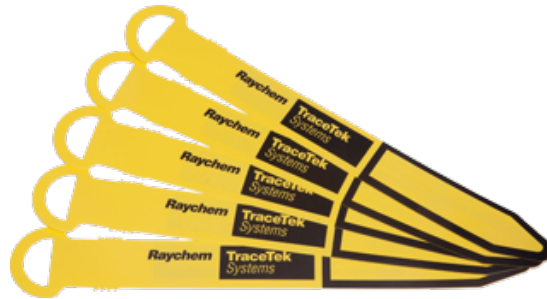


TRACETEK TT-TAG

TAG

PRODUCT OVERVIEW

The TraceTek tags are to identify TraceTek sensing cable and record mapped distance. Tag attaches to sensing cable by closing on itself (like a cable tie). Package contains 50 high-visibility yellow tags and a permanent marker. Use a tag on each length of cable and at mapping points.



TT-TAG

ORDERING INFORMATION

Catalog number	P/N	Description
TT-TAG	407347-000	Identification / Mapping Tags for sensor cable

Important:

All information, including illustrations, is believed to be reliable. Users, however should independently evaluate the suitability of each product for their particular application. We make no warranty as to the accuracy or completeness of the information, and disclaims any liability regarding its use. We only obligations are those in the Terms and Conditions of Sales for this product, and in no case will we or its distributors be liable for any incidental, indirect, or consequential damages arising from the sale, resale, use, or misuse of the product. Specifications are subject to change without notice. In addition, We reserve the right to make changes - without notification to Buyer - to processing or materials that do not affect compliance with any applicable specification. All trademarks set forth herein are owned by their respective owners and all rights reserved.